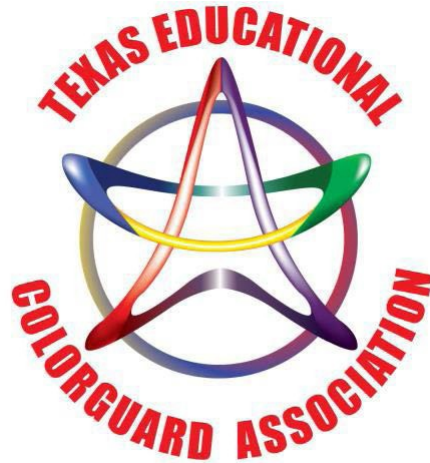




**Wagner High School Invitational
February 24th, 2018**



A TECA Sanctioned Contest
hosted by the

Wagner Color Guard and Band Boosters

Performance Start Time at 9am.

For questions contact:

Color Guard Director: Nicole Rann (908)210-8660

Wagner Colorguard, Winds and Percussion Conetest Information

LOCATION, DIRECTIONS AND MAP:

The Wagner Contest will be held on Saturday, February 24th 2018
at Karen Wagner High School located at
3000 N Foster Rd. San Antonio TX 78109.

Directions

Driving West from FM 78-
Drive west on FM 78, take a left on
Foster Rd. Turn left on
Candlemeadow.

From East 78-
Drive East on FM 78, turn right on
Foster Rd. Turn left on
Candlemeadow.

From West I-10-
Drive West on I-10, turn right on
Foster Rd. Turn right on
Candlemeadow.

From East I-10-
Drive East on I-10, turn left on to
Foster Rd. Turn right on
Candlemeadow.

PARKING:

**Spectators will enter the school using the entrance at Wildflower way
and will follow the road around to the gym entrance.**

The Spectator parking lot will be located directly in front of the main entrance to the Gym.

COLORGUARDS:

Buses and equipment trucks are to enter at the Traffic Light, Candlemeadow.

Buses and equipment trucks for Guards will make the first right and proceed to the circle lot to unload at the check in/ drop off point located at the main entrance of the school and then proceed to the bus/trailer designated areas. If you have large props, please have your unit check in first and meet your truck or trailer at the large prop entrance for easier unloading.

PERCUSSION and WINDS:

Buses are to enter at the Traffic Light at Candlemeadow.

Buses for percussion units will make the first right and proceed to the circle lot to unload at the check in/ drop off point located at the main entrance of the school and then proceed to the bus designated areas. Please have your unit check in at the main entrance then proceed to meet your truck at the large prop entrance for unloading.

Equipment trucks/ trailers are to enter at Wildflower Way and will follow the road to the General Warm up area for unloading of instruments. After unloading trucks/trailers must park in the designated truck and trailer area.

Wagner High School Map with traffic flow



1

CONTEST INFORMATION

All contest rules and regulations from the 2017-2018 TECA Constitution and By Laws and the 2017-2018 WGI Rule Books will be followed.

All props, performance shoes and equipment must be padded and taped according to the TECA and WGI rule books specifications. Please refer to the 2017-2018 WGI Colorguard and Adjudication Manual and Rule Book for further information.

CHECK-IN

The check-in table for all participants will be located inside the main entrance of the school by the Circle lot. Performing members must check in prior to warm-up.

- Equipment - At check-in, performers must show the check-in representative that equipment is appropriately padded and taped. Maps of the school and performance times will be available.
- Crew and Staff Admission – Admission bracelets will be given to performers, 2 directors and up to 10 student crew members.

COLORGUARD, PERCUSSION AND WINDS AREA

Tables will be set up in the cafeteria for each group to store personal items.

- Props/Floors and larger equipment will be stored in the Prop Storage Area in the main hallway of the school.

The cafeteria and hallways are traffic areas only. Students and staff will not spin, toss or maneuver any equipment at any time other than in designated warm up areas.

- You may use the parking lot behind the cafeteria for pre warm up.

OFFICIAL WARM UP TIME AND PERFORMANCE: GUARDS

BODY WARM UP

When it is time for your group to be “READY”, please report to the Ready table located in the cafeteria. You will be escorted by a monitor to each warm up area.

Body warm up will be in the Dance Studio. Students may stretch or do a body run through. No equipment will be allowed during this segment of the official warm up time. A sound system will be made available to you.

EQUIPMENT WARM UP

After Body Warm Up, your group will be led to the warm up gym and will be placed in holding until your equipment warm up time starts. A sound system will be made available to you.

PERFORMANCE

After Equipment Warm Up, your group will be led to the performance area. You will be placed in holding until your official set up and performance time begins.

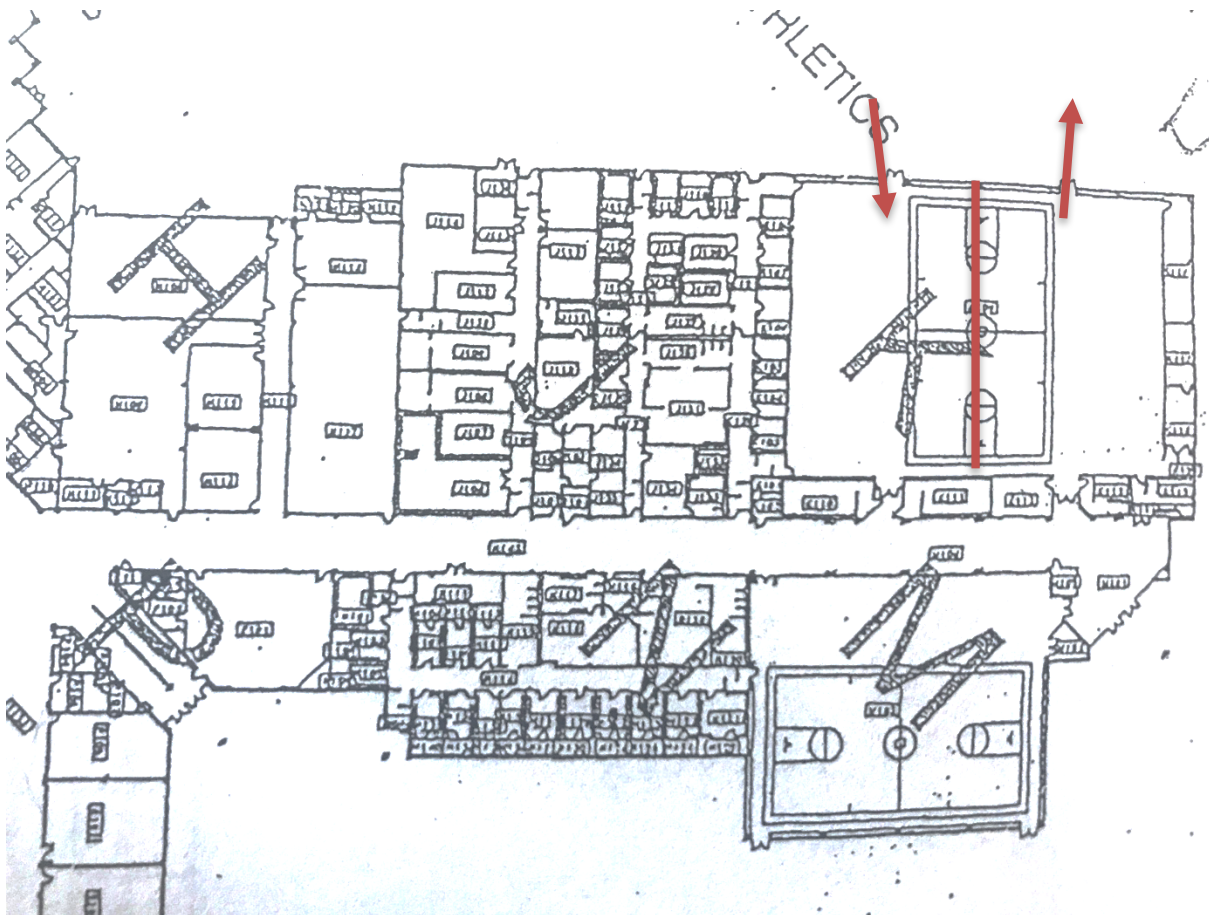
OFFICIAL WARM UP TIME AND PERFORMANCE: PERCUSSION AND WINDS

TIMED WARM UP:

- Your units timed warm up will be located in the General Warm up area outside.
- Once your warm up is over you will transition to the gym from the outside. You will enter back right corner with a **HORIZONTAL TIME LINE** and exit the front right corner back into the parking lot to fold floor and put equipment away.

Please follow flow map below.

(If raining we will have warm up inside in the Band Hall, and will follow the Guards flow map)



POST PERFORMANCE

After exiting the performance area, staff and unit members should make sure that all equipment is secured and then proceed to pick up the show music.

- Floor folding will be outside in the parking lot, if raining, floor folding will be done in a hallway.
- Comments and score sheets will be sent electronically.

RETREAT

- Unit Captains will need to start their line-up in equipment warm up gym after the last unit of the evening.
- There will be a critique session hosted by the adjudicators and TECA for unit directors to attend

SPECTATOR ADMISSION

- Wrist bands will be sold at the spectator entrance. All spectators must have a wrist band to enter the competition.
- Admission is \$7.00 for adults and \$5.00 Student. Children under 3 are free. Cash and Credit Cards are accepted.

CONCESSIONS

- Concessions will be available throughout the day in two different locations. The cafeteria and near the Gym entrance. Cash and Credit accepted in the Gym Concessions. Cash only in the Cafeteria.
- No outside food or drink will be allowed inside the school.

FLOWERS AND SHOUT-OUTS

- There will be booths selling miscellaneous items. Good luck air-grams and congratulatory flowers will be available for purchase, as well as a festival t-shirt listing participating groups and a festival patch.
- Shout-outs for purchase: \$3.00 each or 2 for \$5.00. Cash only. Carnations will be \$2.00 each.

Additional information and help is also available on the TECA website
<http://www.goLteca.org>.

We look forward to seeing you!

