

# Jourdanton Winterguard Invitational

*Percussion Competition 8:30 AM*

*Colorguard Competition: 1:15PM*



Saturday, February 4<sup>th</sup>, 2023  
Jourdanton High School Gymnasium

*A TECA Sanctioned contest hosted by the  
Jourdanton High School Band Boosters and the  
Jourdanton High School ELITE Winterguard*

Welcome to Jourdanton High School! We are very excited to still have the opportunity to host TECA and help give the opportunity for all of our groups to still perform this year. While you are here we hope that you enjoy your time on our campus. We take great pride in our facilities and ask that you help us to keep them beautiful.

If at any time on or before your contest day you have any questions or concerns regarding our campus or the flow of the contest, please do not hesitate to reach out to us.

*Thank you and enjoy your day in Jourdanton!*



David Torch  
dtorch@jisdtx.us

Camryn Bly  
cbly@jisdtx.us

Victor Casas  
vcasas@jisdtx.us

## **Jourdanton Contest Information**

### **I. Location, Directions & Map**

The Jourdanton Winter Guard Invitational will be held at Jourdanton High School which is located at 200 Zanderson Ave, Jourdanton, Texas 78026.

*From San Antonio or points north:*

Take IH 35 South until you get to the Poteet/Highway 16 Exit. Go south on Highway 16 through Poteet to Jourdanton. Pass the traffic signal at Highway 97 and go about a mile. The school will be on the right.

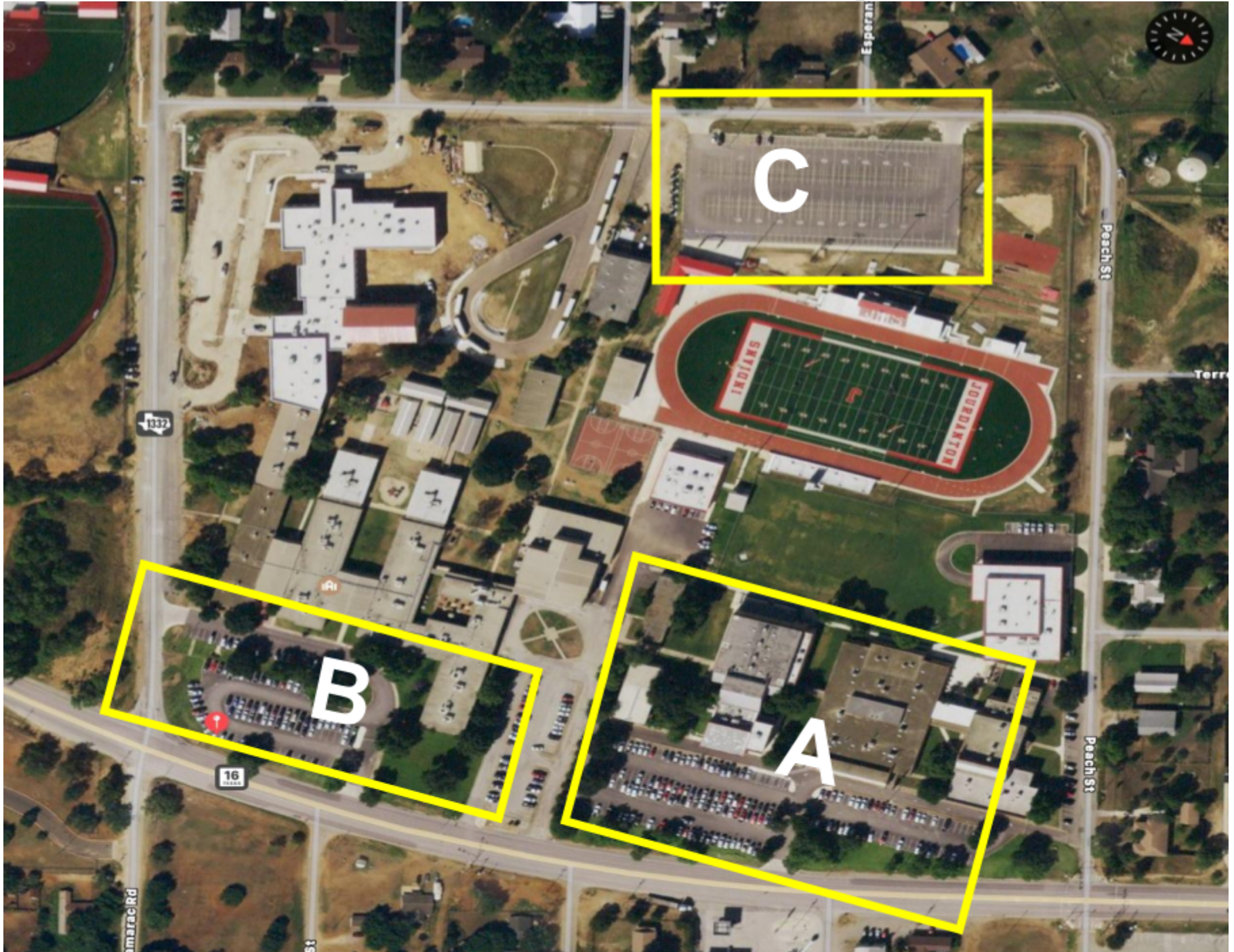
*From Corpus Christi or the Rio Grande Valley:*

Take IH 37 North until you get to the Pleasanton/281 N exit. Follow 281 until you get to the signal light at Highway 97 (Oaklawn St.) Turn left onto Hwy 97/Oaklawn. Go about 5 miles (past HEB, Sonic, Wal-Mart) until you get to the signal light at Highway 16. Turn left onto HWY 16. The school is about 1 mile on the right.

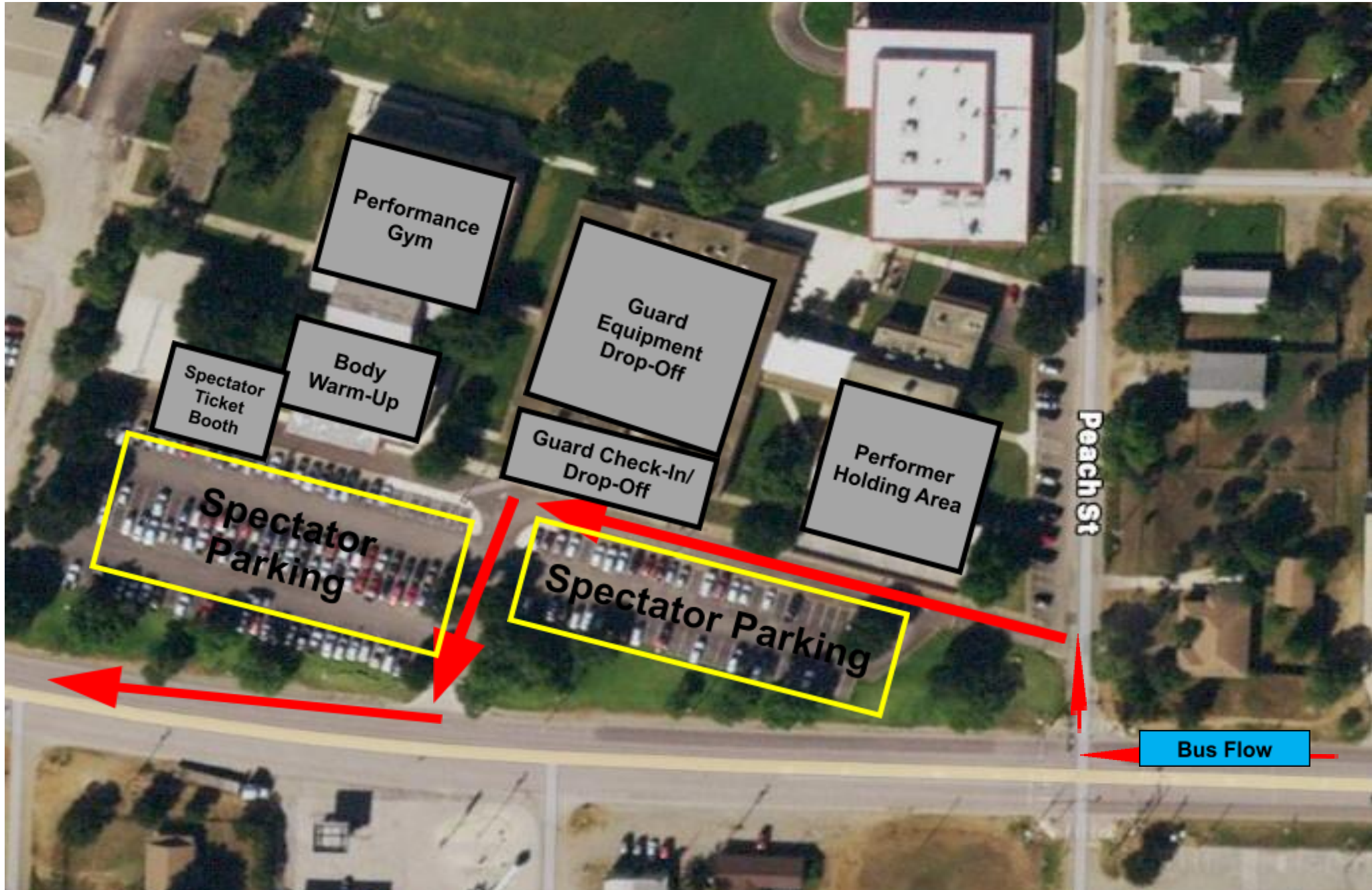
*From Laredo:*

Take HWY 59 North until you get to Freer. Turn left onto HWY 16 in Freer. Go through Tilden and remain on 16 until you get to Jourdanton. The school will be on your left just inside the city limits.

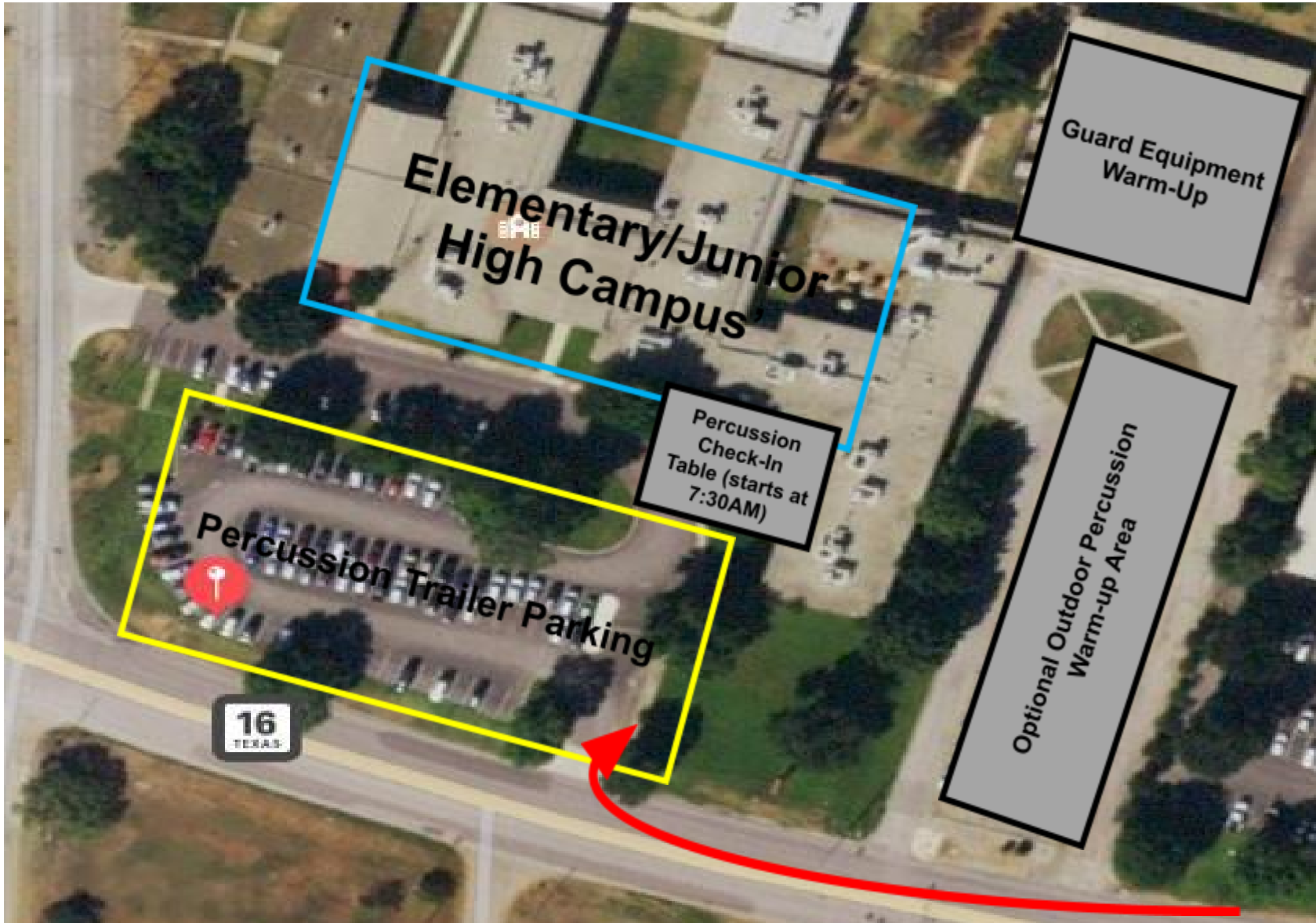
**We will be utilizing three different zones of our campus for the contest.**



**ZONE A:  
SPECTATORS, GUARD DROP-OFF/CHECK-IN, & GUARD HOLDING/EQUIPMENT**

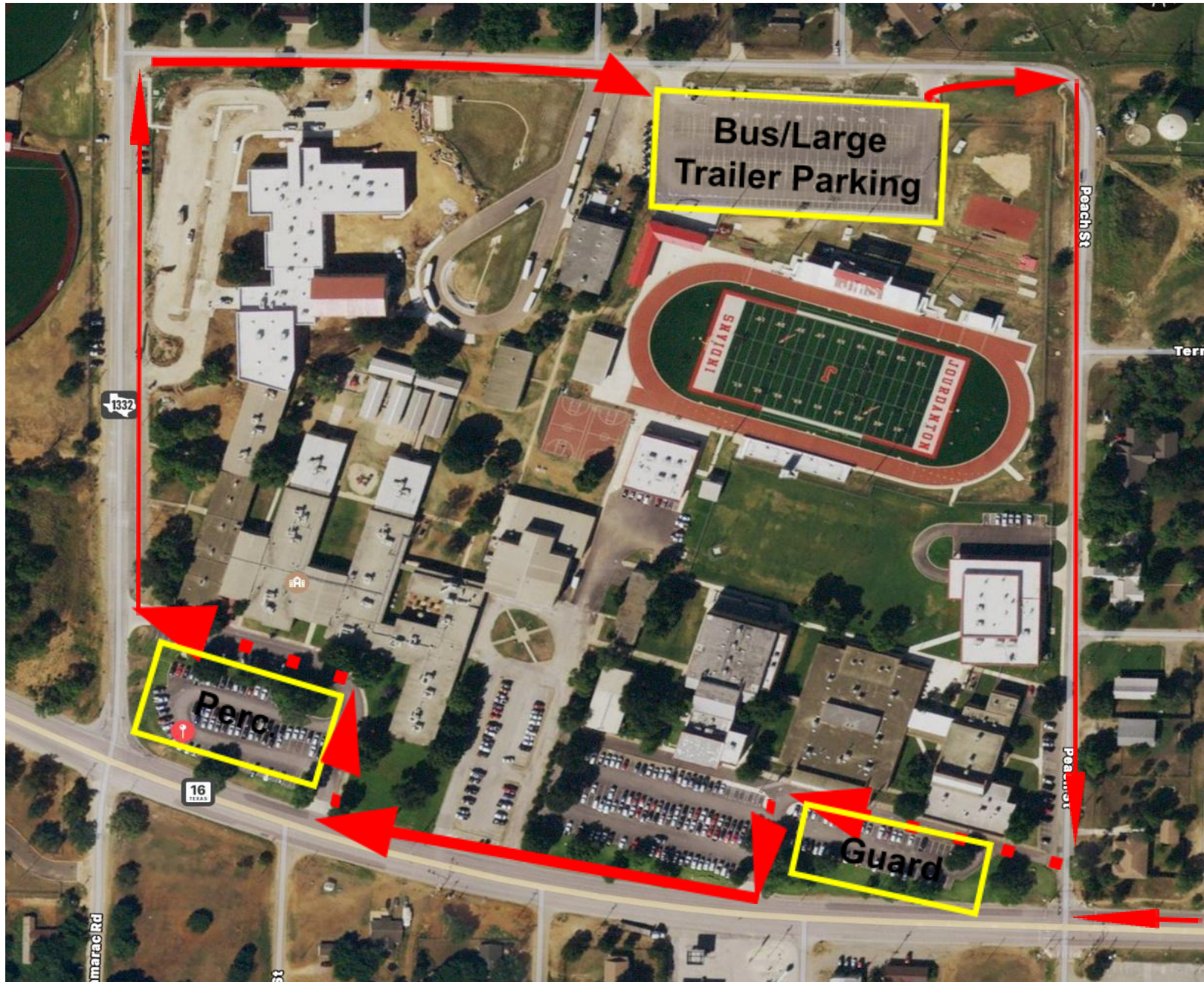


**ZONE B:  
PERCUSSION TRAILER PARKING AND OPTIONAL WARM-UP AREA**



**Percussion groups are also welcome to warm-up by their trailer room permitting.  
Larger Percussion trailers can unload here and park in Zone C.**

**ZONE C:  
SPECTATORS, GUARD DROP-OFF/CHECK-IN, & GUARD HOLDING/EQUIPMENT**



## II. Contest Flow

### a. Bus Parking

Bus Parking will take place in Zone C at the back of the campus in the Stadium Parking Lot. Guard performer check-in and drop-off will happen in front of the High School building. Percussion Trailer Parking will be in front of the Elementary and Junior High Campus'. Large percussion trailers may unload in front of the Elementary/Junior High Campus' and then move to Zone C to park to save space.

### b. Check-In

The check in table will be located outside in front of the HS campus by the band hall for all students. Percussion students and winds can get dropped off by band hall and walk over to their equipment truck. When students get dropped off make sure all props and or guard equipment are unloaded in the high school lobby. We will have people directing you there. At 7:30AM, the check-in table for percussion will be at Zone B in front of the Elementary/Junior High for convenience of the percussion groups. Or you have the choice to drop off at band hall and a guide can walk you over to warmspot.

### c. Holding Area/ Props and Equipment

Guard equipment and floors/props will be stored in the HS building directly behind the check-in table. The guard holding area will be in the Cafeteria to the left of the HS building. We ask that guards do not hang out inside of the HS hallways, but use the cafeteria instead. We also ask for no outside food in the Cafeteria. If you would like to purchase a meal. Our Boosters will have meal deals.

Percussion equipment should remain by/in their trailers. If you are intending to use the optional outside warm-up area, please do not leave anything behind while you are not in the area.

All props, performance shoes and equipment must be padded and taped according to the TECA and WGI rule book specifications. Please refer to the WGI Color Guard and Adjudication Manual and Rule Book.

### d. Guard Warm-Up

Guard Body Warm-up will be in the Band Hall and Guard Equipment Warm-up will be in the Junior High Gym. Guards may use outside spaces by the cafeteria to warm-up with equipment or stretch prior to their warm-up time if they would like, but no equipment should be used inside except for the Equipment Warm-up and Performance Gym.

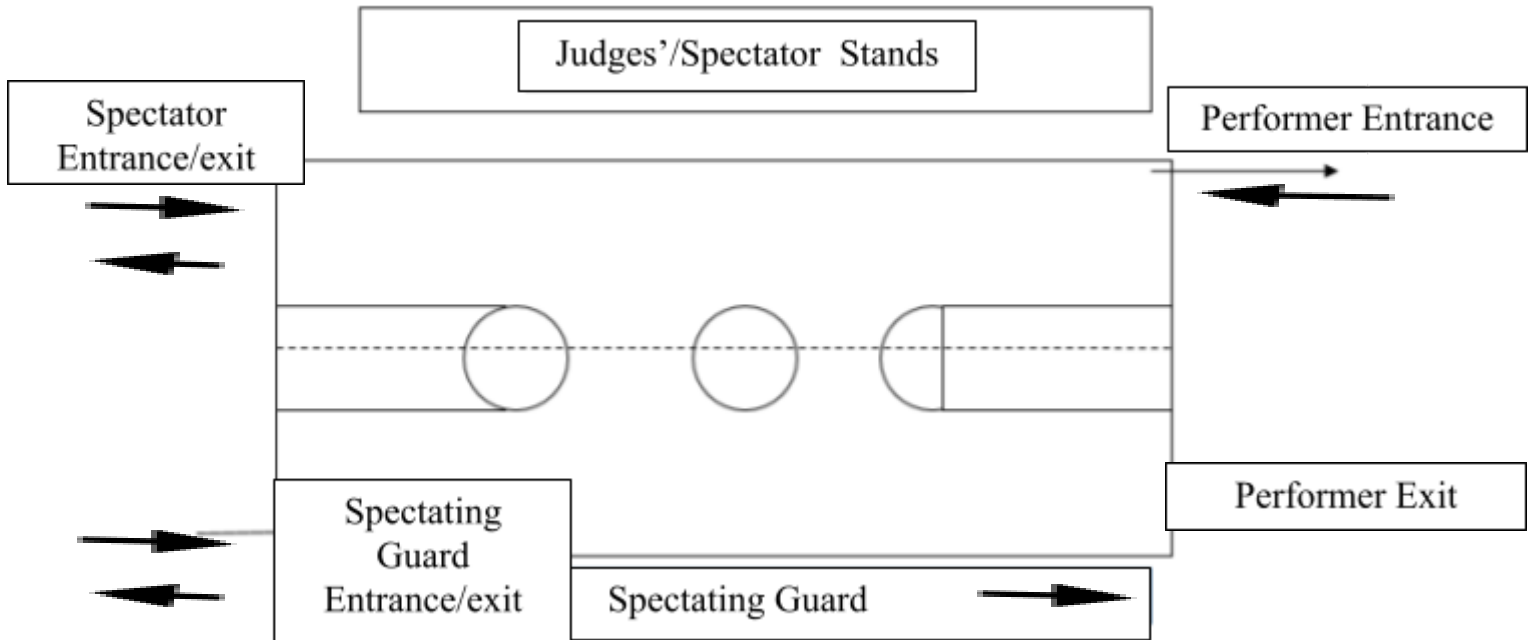
### a. Post-Performance

Please make sure that you are familiar with the rules when it comes to allotted time available.

After you exit the performance area, staff members will need to make sure that all of their equipment is put away. Results will be done electronically through the Competition Suite.

There will be several retreats throughout the day.

**WE WILL BE UTILIZING A HORIZONTAL CENTER LINE FLOW FOR THE PERFORMANCE AREA.**



### **III. Admissions**

Spectator parking will be in front of the HS campus and Performance Gym. Tickets will be sold in front of the parking lot at the following prices:

Adults \$10, Students \$8, and children under three are free.

Airgram sales will be done at the ticket table for \$2 for one and \$5 for three.

### **IV. Concessions**

Concessions will be made available outside the Performance Gym

*Directors can also order a meal ahead in bulk via email to Mr. Torch at [dtorch@jisdtx.us](mailto:dtorch@jisdtx.us). Orders should be placed by noon on Wednesday, February 1st .*

*The meal deal will include a cheeseburger, chips, and a water bottle for \$8 per student.*





**AIR GRAMS**

PRICES

---



**MESSAGE \$2**  
**BUY 3 FOR \$5**

---



**TICKETS**

PRICES

---



**ADULTS \$10**  
**STUDENTS \$8**

---



**JHS BAND  
BOOSTER MENU**

**SPECIALS**

**NACHOS-\$3.00**  
**HOT CHEETOS W/CHEESE-\$3.00**  
**FRITO PIE- \$3.00**  
**PRETZELS (CINNAMON SUGAR, SALT, CHEESE)-\$3.00**  
**BRISKET TACO-\$4.00**  
**CARNE GUISADA TACO-\$4.00**  
**CORN IN A CUP-\$3.00**  
**SAUSAGE WRAP-\$3.00**  
**HOT DOGS-\$2.00**  
**HOT DOGS W/ CHILI & CHEESE-\$3.00**  
**CUP OF NOODLES-\$1.00**  
**SPICY CUP OF NOODLES-\$2.00**  
**CHOCOLATE CANDY- \$2.00**  
**NON-CHOCOLATE CANDY-\$1.00**  
**CHIPS-\$1.00**  
**POPCORN-\$1.00**  
**PICKLES\$1.00**  
**BLOW POPS-\$1.00 (4)**  
**FRESANADA- SMALL \$3.00, LARGE \$5.00**  
**MANGONADA- SMALL \$3.00, LARGE \$5.00**  
**SODAS-\$2.00**  
**WATER-\$1.00**  
**GATORADE-\$2.00**  
**SMALL GATORADE-\$1.00**



**MEAL DEAL!!!!**



Be sure to order your meal deal!  
 Cheeseburger, Chips and Water -\$8.00  
 You can pick up your pre-ordered meal deal at the concession stand by the gym.  
 All orders need to be placed by Feb. 1st @ noon. Thank you

## V. Merchandise

On-site merchandise will be done by TMF and their tables will be located in the hallway by the spectator entrance.

## VI. Additional Information

You may get online information and help via the TECA Website at [www.go-teca.org](http://www.go-teca.org) If you have any questions or need any additional information, please reach out to our contest host, David Torch, via email at [dtorch@jisdtx.us](mailto:dtorch@jisdtx.us) or cell phone at +1(956)532-5752.